



Photo © Jona Harnischmacher

## CONTACT INFORMATION

Michael Zandl | Zellerstrasse 36 | 5671 Bruck/Glstr. | Austria  
 +31 6 49226896 | +43 664 4060441  
 info@michaelzandl.com | www.michaelzandl.com

## IN SHORT

Duration: 60 min | Language: no words | Crew: 2 people | Age: 6+  
 Stage: flat floor, minimum measurements: 8x6x3,7m (WxDxH)  
 Possibility to completely darken the room  
 Build-up time: 8 hours | max. 3 shows per day

## FULL SHOW // Kristallwerk Graz | June 2019:

[https://www.youtube.com/watch?v=ftceXVF\\_yrk&feature=youtu.be](https://www.youtube.com/watch?v=ftceXVF_yrk&feature=youtu.be)

## TRAILER

[https://www.youtube.com/watch?v=sQiK\\_qPp4sE&feature=youtu.be24](https://www.youtube.com/watch?v=sQiK_qPp4sE&feature=youtu.be24)

## CREDITS

concept Michael Zandl  
 director Matthias Romir  
 artists Michael Zandl, Tom Henden  
 dramaturgy Stefan Wipplinger  
 technical assistance Daniel Beiter, Felix Gierlinger, Elias Wögerbauer  
 special thanks to Roland Kumpl, Joanna Czekajlo, Melina Matzanke, Peter van Heesen, Kolja Huneck



---

## JANUS

A table, a chair, a closet, no exit. The world in which this man was born seems very modest at first view. Obviously different rules apply here, but this you can only know if you have been already somewhere else. He was never somewhere else. As he begins to question the reality of his life, it nearly seems that there is, next to objects that come alive and a small bugging fly which he shares the room with, an imperceptible power that is playing a perfidious game with him. Yet who is holding the threads in the end is even surprising for himself.

“Janus” is a strange, poetic, magic, humorous, Kafkaesque psycho-thriller, which includes especially one ingredient: hats.



---

## FORMAT

What makes this show unique is that it provides a whole stage with curtains, dance-floor, light- and sound equipment and everything that is needed. This not only enables to play with specific illusions, but more gives the possibility to create a theatre in all different kinds of locations. This way contemporary circus can be brought to regions where this kind of art is not known or expected and where similar cultural events are difficult to be found.



---

## AUDIENCE

The piece is primarily directed towards a teenage and grown-up audience, so that more complex symbolism and metaphors can be understood. Through the easy understandable humour, catching special effects and the length of one hour it is also suitable for a young audience. Because it is a nonverbal performance, there is no language barrier.

Photo © Jure Stuszek





## MICHAEL ZANDL



Photo © Peter van Heesen

Michael was born 1989 in Austria. After finishing his natural science studies in Vienna, he decided to follow his dream and turn his long-term passion for circus into his profession. He moved to Rotterdam to study at Codarts Circus Arts, where he was awarded the Marc Jonkersprijs for his outstanding graduation performance and study results. During his career he worked, amongst others, with renowned directors like Roberto Magro or Ed Wubbe (Scapino-Ballet Rotterdam). In May 2017 he was selected for YOUNG STAGE Festival in Basel.

His creations are shaped by his precise and humoristic character and he always strives to push the physical borders of his objects. Janus is the result of never giving up on his long-term dream, to create a full-length solo piece.



Tom, born 1989 in Norway, first studied music before he came to Rotterdam in 2011 to study at Codarts Circus Arts with his partner as an acrobatic duo. Since his graduation he is active as a free-lance artist and worked in many productions such as "TensionTrail" (Penguin Productions) or "The sum of what we do" (Cie Pile-en-Face). In 2018 he founded the acrobatic company Statera.

Next to performing he is also active as a trainer for acro-dance, floor-acrobatics and bouldering. Since 2017 he joined Michael in several projects and is now an indispensable part of Janus.

## TOM HENDEN

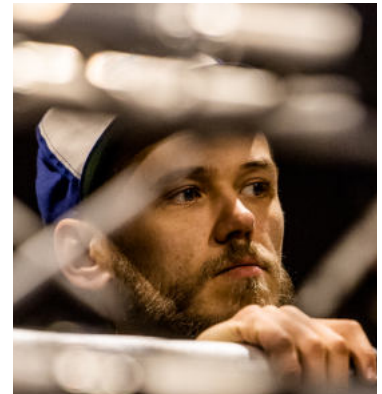


Photo © Peter van Heesen

Photo © Jure Stusleek





# TECHNICAL RIDER

**THE PERFORMANCE** Janus is a circus performance which is played indoors.

**JANUS ARRIVES WITH** 2 performers, 1 van (Renault Trafic, length: 5,4m)

**DURATION** The duration of the performance is **60 min**. In case of multiple shows per day a minimum of 3 hours between the beginnings of each show is needed. It is possible to play max. 3 shows per day.

**STAGE DIMENSIONS** The minimal floor dimensions for the stage are **8x6m** (width x depth) with a height of **3,7m** over the entire surface (free height under grid). In case of extra off-space left and right of the stage, it can be possible to play on smaller stages.

Please note that we have **two different possible sizes** of our stage:

Size A: 9x7x4,3m (WxDxH)

Size B: 8x6x3,7m (WxDxH)

**FLOOR** Janus is performed on **black dance-floor**. This dance-floor has to be arranged by the organization.

The floor has to be **levelled, firm, silent and flat**. It is essential that the floor is free of any irregularities and that it is **completely smooth** without any wrinkles, waves, overlaps, etc.. (we need to drive with a very small remote control car on it).

We have the possibility to bring our own dance-floor in certain cases (this has to be agreed on beforehand).

**BLACKS** It must be possible to **completely darken** the room (for blacks). All distracting lights (except emergency exits) must be turned off during the performance.

**BUILD-UP & DOWN** Time is needed to offload, build, break and load our decor and equipment. The required time depends on the situation, but we count with a minimum of 8 hours for build-up and 4 hours for build-down. Final times will always be discussed and agreed on with the organization.

We need help of one technician, which is familiar with the location, for the first 2 hours of our build-up. After that, one technician should be available at call if needed.

**Any damage done to the property of the performers (equipment, car, etc..) which is caused by the staff of the organization, or any person hired by the organization, will be, without exception, fully covered by the organization.**



- 
- EQUIPMENT STORAGE** The contractor has to arrange a **lockable space** to store our equipment directly after arrival, until departure (in the same location as of the performance). We cannot leave our equipment in the car. The times of arrival and departure have to be agreed on beforehand. In case of an evening show, departure is the following day.  
Required size: 3,5x2x2m (LxWxH)
- DECOR** We bring a **truss-construction** for our technical equipment, our curtains and part of our lights with us. In front of our structure we place two **side wings on tripods** (see technical drawings).
- SOUND** The contractor provides a sound installation. We need a connection to this sound installation on stage right side (audio jack 6,3mm left+right – for position on stage please have a look at the technical drawing – top view).  
We will bring a second sound system, which is used only for sound effects on stage. In case the contractor cannot provide a sound installation, this system could be used for max. 150 spectators (this has to be discussed and agreed on beforehand).
- LIGHT** All required light equipment will be provided by us. We bring 16 LED Lamps (Cameo TS 60W). 2-3 Lamps have to be rigged in the location as front lights in a certain position. Please check the technical drawing carefully, to see if the required position is possible. In case of any concerns, please get in contact with us.
- LICENSING** All necessary licenses (e.g.: GEMA, music, events, etc..) will be organized and paid by the organizer.
- SMOKE MACHINE** We are using a smoke machine during the show and rehearsals/build-up. The organizer is responsible to take care of fire-alarms etc...
- AUDIENCE** To guarantee a good visibility of the show, the audience has to be seated in a certain position to the stage. Please have a look at the technical drawing.
- POWER SUPPLY** We need **two 230V 16 A power connections** for light and sound. For positions, please check technical drawing (top view).
- DRESSING ROOMS** A dressing room close to the stage is necessary. The dressing room must be warm and equipped with at least one mirror, running water, sufficient light and preferably a shower.



**PARKING** We will arrive with one van (Renault Trafic). For unloading and loading it must be possible to roll our equipment directly to the stage (and storage) on a wheel board.

Reservation of parking spaces and/or parking permits close to the performance-venue (max. 10 min walking) will be arranged by the organizer. Costs of parking on the days of the performance, build-up and build-down are on the account of the organization.

**CATERING** On performance days the organization will provide at least one warm meal for each performer, or pays each performer a per diem of 25€.

During our build-up, we expect water, tea, coffee and small snacks for 2 persons. NOTE! We are two vegetarians (no meat, no fish).

**ACCOMODATION** When performances are scheduled for multiple days in a row, or at times that make a build-up of build-down and travel unreasonable, the organization arranges and covers accommodation.

Rooms: 2 single rooms.





PLEASE NOTE THAT WE HAVE TWO DIFFERENT POSSIBLE SIZES OF OUR STAGE!

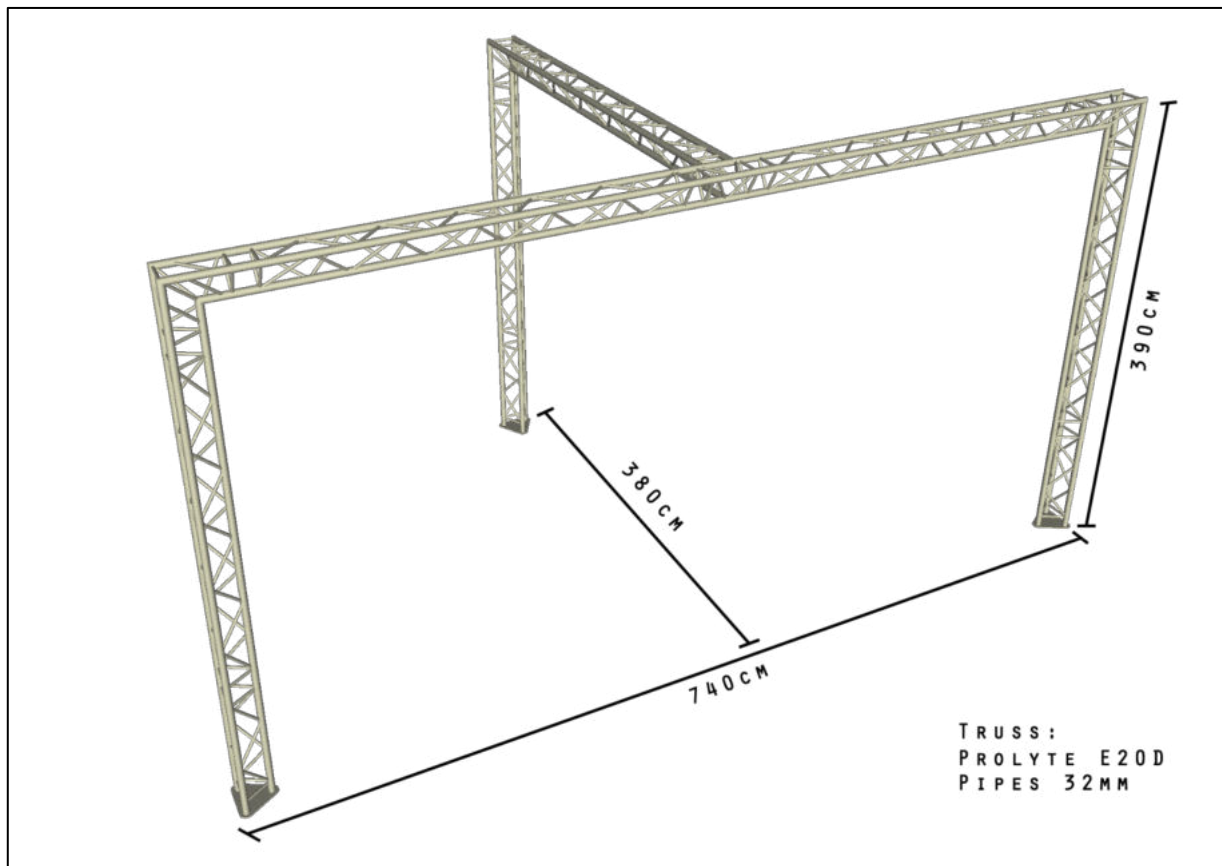
SIZE A: 9x7x4,3m / SIZE B: 8x6x3,7m

THE FOLLOWING DRAWINGS REFER ONLY TO SIZE A

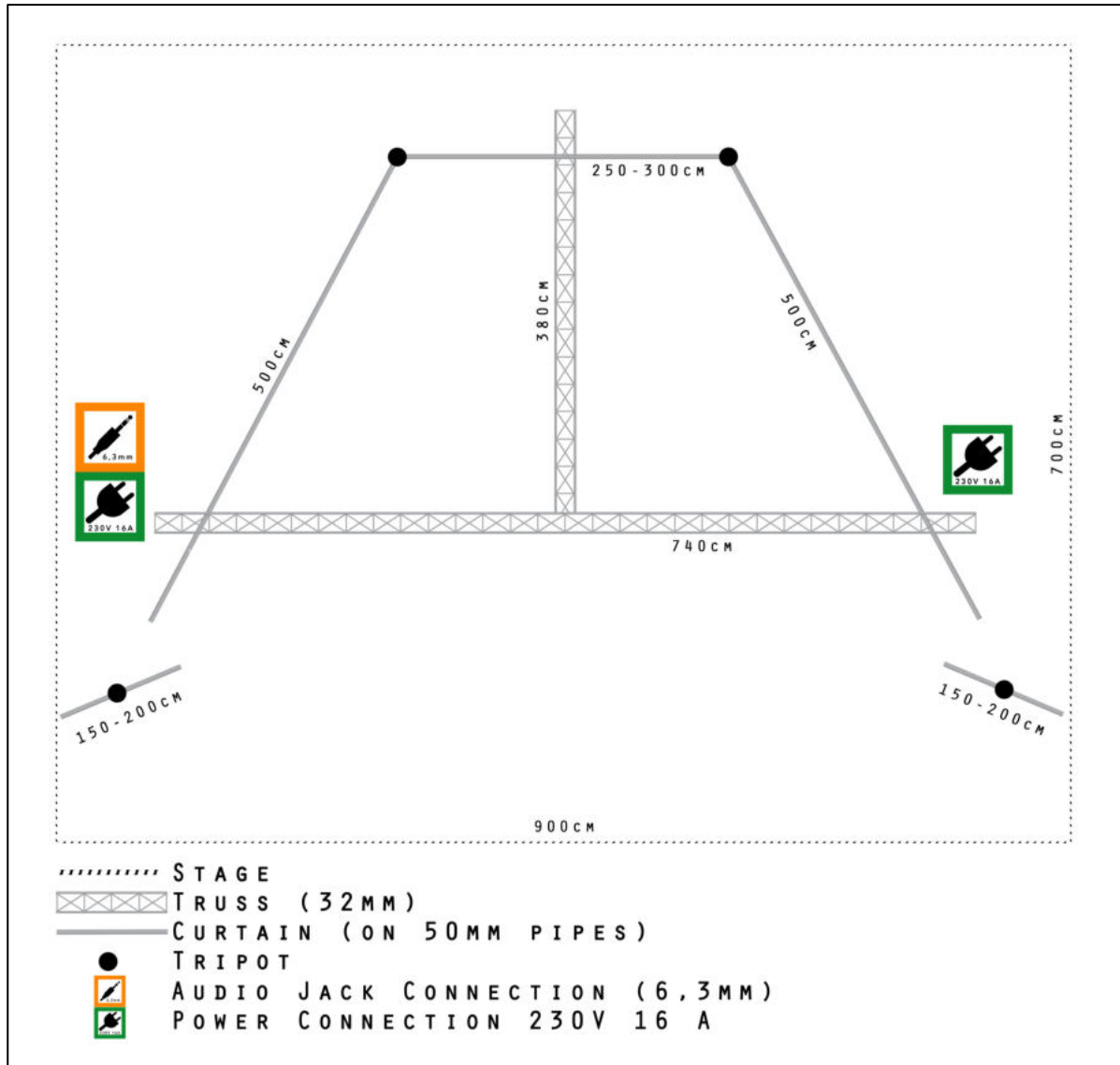
## PICTURE OF STAGE



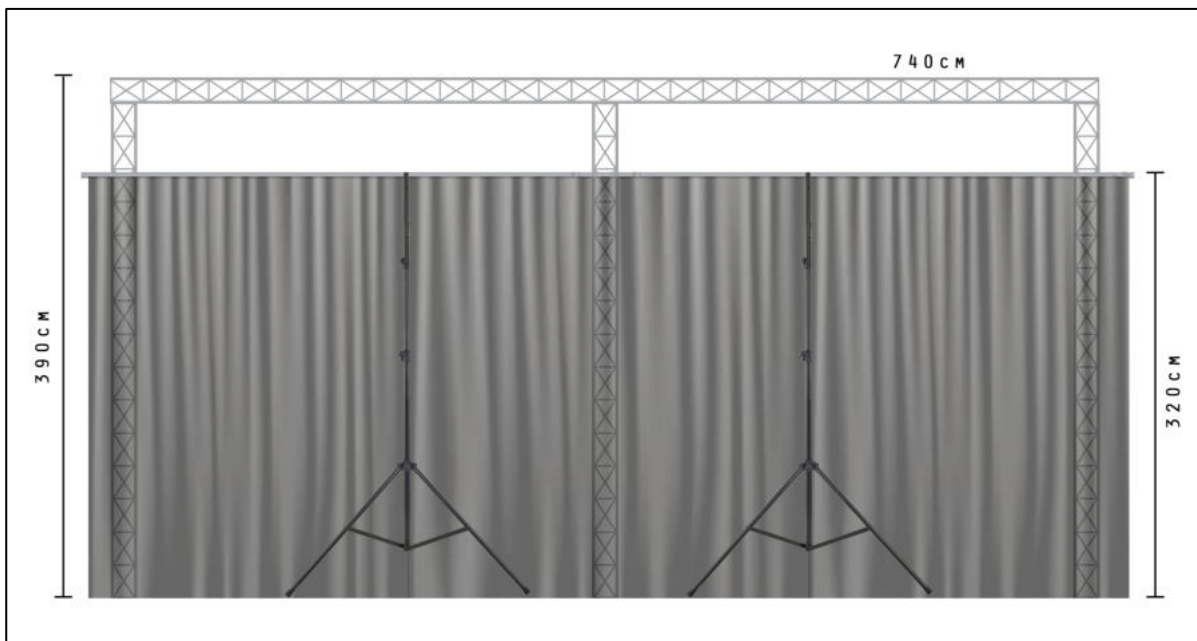
## TRUSS CONSTRUCTION



# TOP VIEW

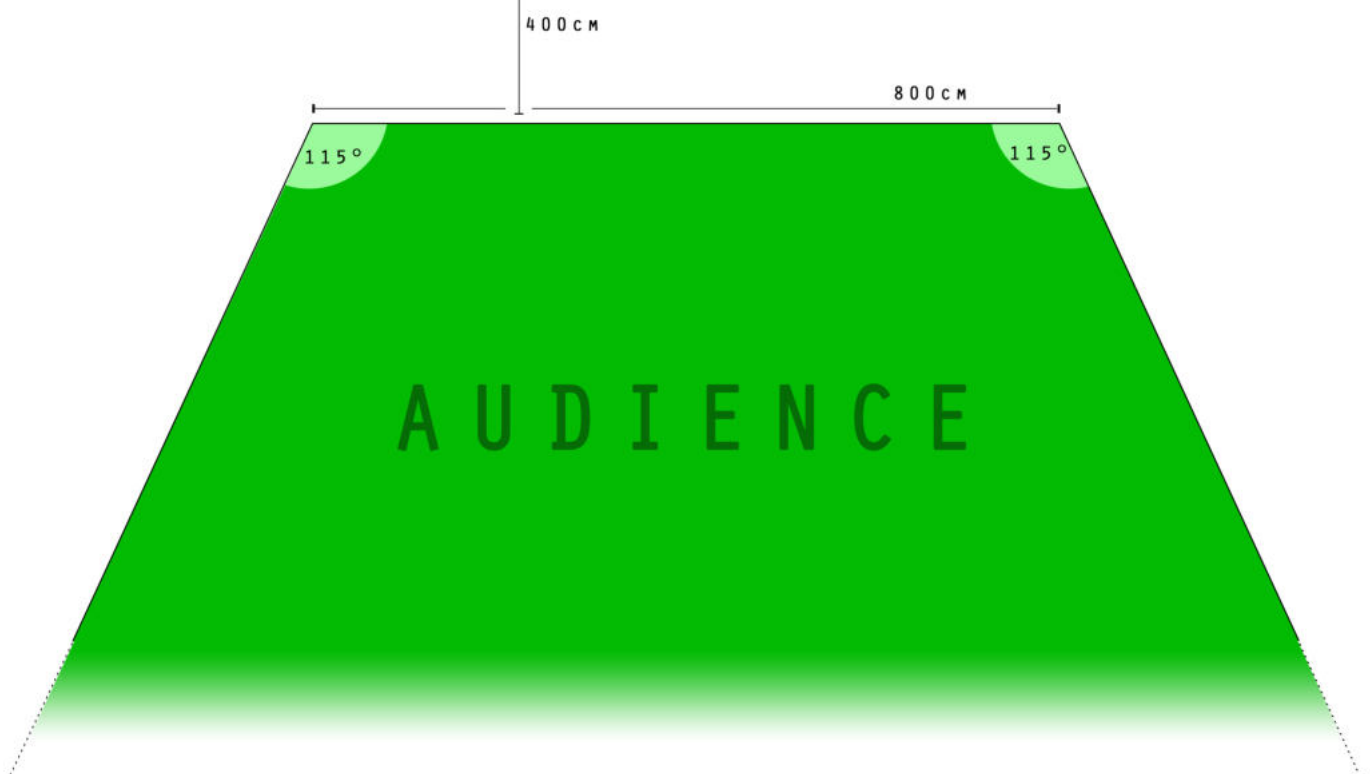
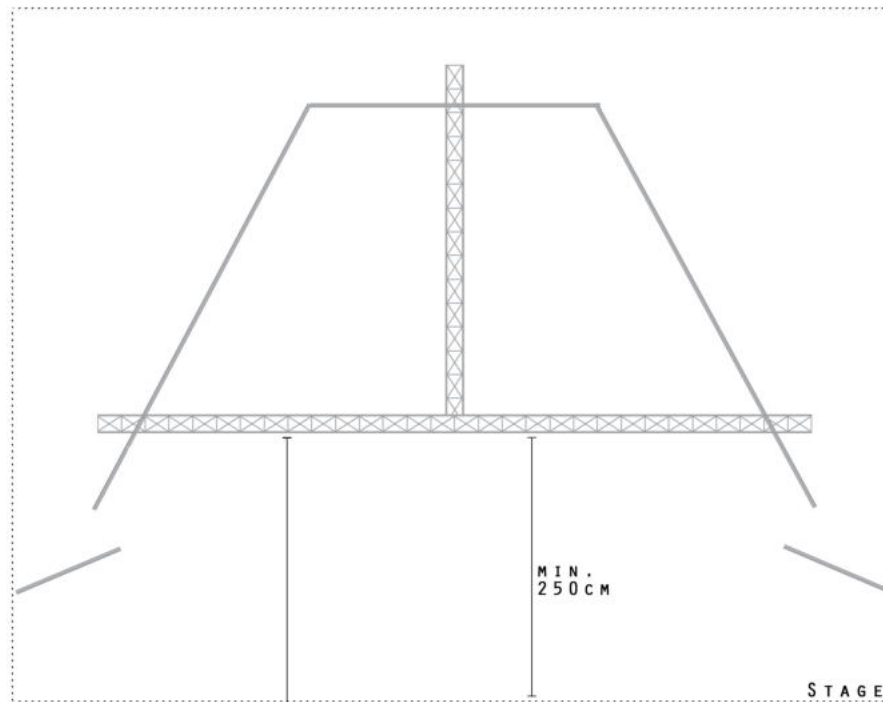


# FRONTAL VIEW (without side wings)





## AUDIENCE (top view)



Max Audience Number: 300

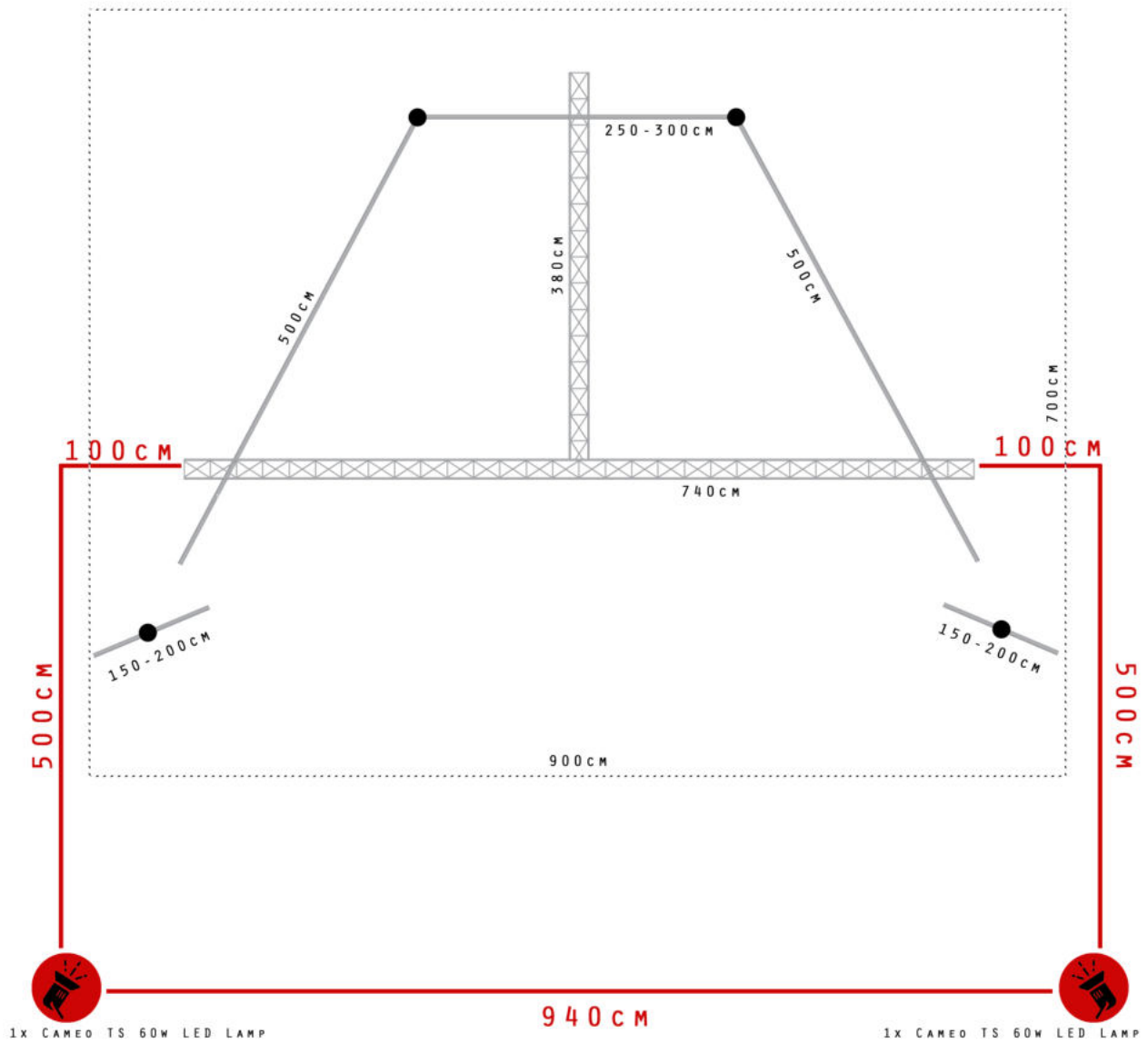
Max Audience Height: 4m

This drawing describes the possible placement of the audience with a stage of 9x7m.

The angles of the possible audience area will become wider with a bigger stage.

If there are any uncertainties about the audience placement, please get in contact with us.

# POSITION FOR FRONT LIGHT (top view)



**MAX HEIGHT OF LAMP: 320 CM ABOVE STAGE**